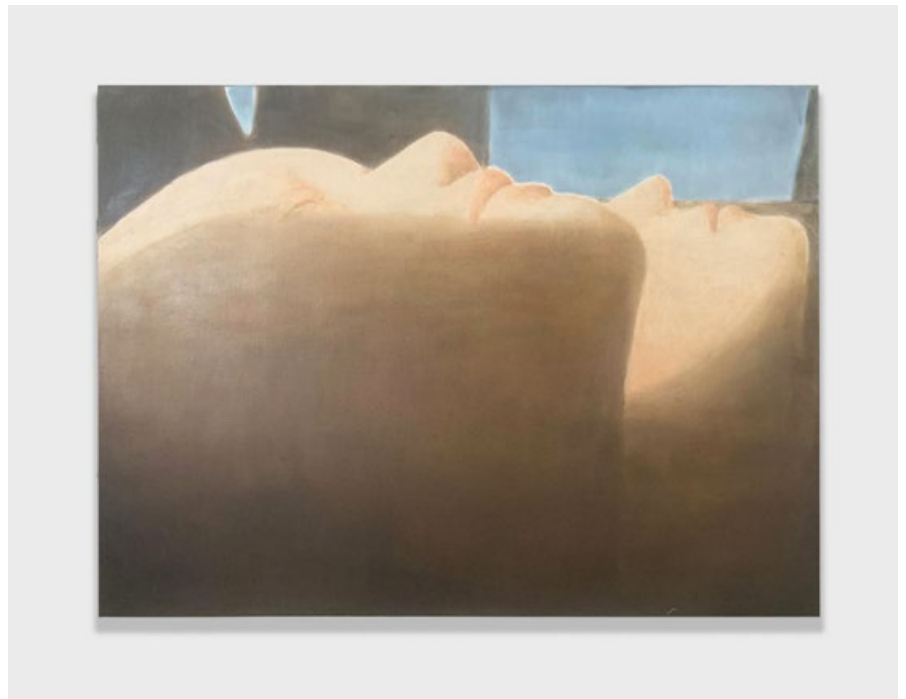


# CELEBRATING FRIEZE LONDON 2020

GRIMM is pleased to present a group exhibition for Frieze London on the Frieze Online Viewing Room, with new works by Tjebbe Beekman, Alex Dordoy, Louise Giovanelli, Loie Hollowell, Matthew Day Jackson, Arturo Kameya, William Monk, Ciarán Murphy, Rosalind Nashashibi, Daniel Richter, Michael Raedecker, Lucy Skaer, and Caroline Walker, as well as works by Elias Sime and Charles Avery.



Ciarán Murphy, *Sleeping (day)*, 2020

A group of new small-scale paintings by **Ciarán Murphy** (B. 1978 in Mayo, IE) are showcased as part of this presentation. Each of the paintings offers different vantage points of the human form, pictured up-close and bathed in ethereal light. Murphy's careful application of paint, and recurrent references to the body, offer quiet moments of solace that contrast the unfolding events of the past year during which the paintings were made. Similarly, **Michael Raedecker's** (B. 1963 in Amsterdam, NL) paintings of suburban homes and landscapes, contain an intensity of stillness and pared-down beauty. Raedecker uses a combination of embroidery, inkjet transfers, and acrylic paint, with a singular ability to coalesce these media in a fluid painterly language.

Selected works by **Louise Giovanelli** (B. 1993 in London, UK) critically engage the medium of oil painting; her work offers multiple interpretations of carefully selected source material, withholding, or including details in combinations that require deeper contemplation. While **Caroline Walker** (B. 1982 in Dunfermline, UK) depicts women at work through a stripped-down documentary approach that comments on the various roles women play in contemporary society. **Rosalind Nashashibi** (B. 1973 in Croydon, UK), who will be in residence at National Gallery in London until March 2021, integrates elements from historical paintings as well as intimate autobiographical

details from her own experiences into lively studies on both life and art. Drawing from painting traditions of interpreting spirituality through the land, as well as the body, **Loie Hollowell's** (B. 1983 in Woodland, CA, US) mandala-like imagery, centers breastfeeding as an aspect of motherhood in the painting selected for this year's Frieze London presentation.

A small-scale painting by **William Monk** (B. 1977 in Kingston upon Thames, UK) takes viewers on a journey into a world of radiant skies, and volcanic landscapes— he depicts a place of elemental forms in a way that communicates with dreams and far-off mindscapes. **Alex Dordoy's** (B. 1985 in Newcastle, UK) paintings translate 19th and early 20th century poster design into the contemporary moment, often filtered through colorways which resonate variously on the dual themes of nature and artificiality. **Arturo Kameya's** (B. 1984 in Lima, PE) recent paintings are part of a series that alludes to the subcultures of Lima, Peru where the artist hails from. Kameya weaves together a sense of place through fantasy, local iconography, and sculptural elements; all factors of a contemporary Peruvian identity.

**Matthew Day Jackson** (B. 1974 in Panorama City, US) draws from Dutch Still Life painting, and an enduring interest in material exploration in two selected works. These paintings are part of an ongoing series of

not for publication

ornate bouquets, commenting on the ways in which the natural world is shaped by man-made processes and ideals of beauty. **Tjebbe Beekman** (B. 1972 in Leiden, NL) fuses abstract, realistic, and expressive elements, boldly incorporating diverse historical painting styles into complex arrangements. At present, Beekman is working on a number of paintings, taking the seven deadly sins as his starting point to create visceral and evocative expressions of their attributes.

**Daniel Richter's** (B. 1962 in Eutin, DE) iconoclastic style is embodied in the painting *Regen*, now displayed for this year's Frieze presentation. This work was part of Richter's touring museum exhibition "Lonely old Slogans" that travelled from the Louisiana Museum in Copenhagen, to 21er Haus in Vienna and finally to Camden Arts in London in 2017.

**Lucy Skaer's** (B. 1975 in Cambridge, UK) bronze pelts are tributes to the interaction between humans and nature. Skaer has long been interested in the allegorical significance of hunting; in these sculptures an unknown animal's fur is stretched out and the rugged, untamed texture of the pelt is emphasized. And, with each passing year, **Charles Avery** (B. 1973 in Oban UK) expands his fantastical universe through drawings, sculptures, furniture design, and art objects — now 16 years in the making. A slice of this world offers visitors to the viewing room a glimpse into the complexity of this project.

Selected sculptures for this presentation by **Elias Sime** (B.1968 in Addis Ababa, ET) and **Saskia Noor van Imhoff** (B.1982 in Mission, CA), introduce divergent approaches in both their conception and methods of execution. Sime's *Concave Triangles*, elaborate thematically and stylistically on earlier works, furthering the artist's method of combining discarded electronics in intricate patterns that bring this detritus to life in a new form. Van Imhoff employs materials associated with contemporary architectural spaces such as plexiglass and neon lighting and synthesizes them with found materials. She emphasizes the values and meanings associated with material hierarchy, and re-contextualizing this order.

A selection from the online viewing room will be on exhibit from October 7 – 11 at 12 Mackintosh lane in London. Studio visits with artist Michael Raedecker, will also be available by appointment during the week of Frieze London, 5 – 11 October, 2020 at his studio, adjacent to the group presentation. Visitors may make an appointment to visit the by emailing [info@grimmgallery.com](mailto:info@grimmgallery.com).



Loie Hollowell, *Divine intervention (working title)*, 2015-2020

#### About the gallery

Established in 2005, GRIMM has two locations in Amsterdam and expanded to New York in 2017. Committed to promoting emerging and mid-career artists, the gallery currently represents 32 international artists. GRIMM provides dynamic programming, exhibiting work by artists of all generations, working in a range of disciplines and mediums. Each year GRIMM participates in global art fairs and produces original monographs and exhibition catalogues. The gallery is pleased to announce an expansion in New York: At the end of 2020, the gallery will move to a new 6,000 sq. ft location in Tribeca.

**For all press inquiries please contact:**  
[press@grimmgallery.com](mailto:press@grimmgallery.com)

**For all sales inquiries please contact:**  
[enquiries@grimmgallery.com](mailto:enquiries@grimmgallery.com)

not for publication