

LOUISE GIOVANELLI

AERIAL SILK GRIMM 202 Bowery, New York
March 06 – April 25, 2020

Opening: Friday March 6th, 6-8pm

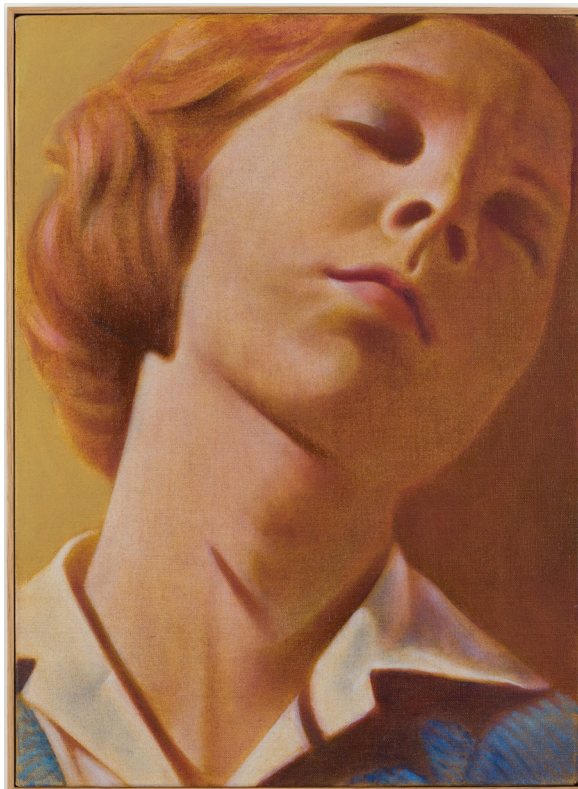
GRIMM is pleased to announce a solo exhibition of new paintings by Louise Giovanelli (1993, London, UK). This will be the artist's first exhibition with the gallery and her first solo exhibition in the US.

Louise Giovanelli has been drawing attention as a rising young painter for her delicate, luminous works, which inject vitality into historical subjects from the canon of Western Art. For her inaugural solo presentation in the US, Giovanelli presents a body of paintings that continue her development of several distinct series.

Giovanelli explores the fidelity of images through a meticulous representational style influenced by the early Renaissance masters. Although her subject matter is carefully observed, she has a detached and unsentimental approach to painting more concerned with the immediate experience of seeing than projected meanings and associations. Her sources are primarily chosen for their formal qualities and include staged photographs, film stills, classical sculpture, architectural elements and ornamentation.

The artist navigates different modes of 'picturing' and approaches to painting encouraging the viewer to switch between modes of looking. Rich fluid hues recede into the canvas contrasted by soft, luminous volumes that define the structure of a supple fold, a strand of hair, or a closed eyelid. As the eye passes over her paintings, sharp lines, 'glitches', or smudges are apparent in some works, causing interruptions in the coherence of the whole. These small interventions and visual non sequiturs are a recurring motif and a method of experimenting with the boundary between modes of aesthetic refinement and distortion.

In the series of paintings titled *Peeping Tom*, each of the works depict a single moment from the 1960s thriller of the same title. Here the viewer is presented with the image of a



Louise Giovanelli | *Peeping Tom* | 2020

woman shutting her eyes briefly before a lethal attack by her stalker, but the context of this original narrative is obfuscated in the painting. Instead, Giovanelli's cropped framing, and fragmented visual clues communicate an atmosphere of violence and restriction.

Dividing and gridding the canvas, the artists gives structure to abstract or natural elements, this creates a pictorial perspective that is distinctively contemporary in the way elements are detached and isolated. This method is present in the series titled *An Ex*, where dense foliage is layered onto the shape of a letter X crossing at the center. In other works, dormant or peripheral objects are enlarged and painted with a sense of deferential authority. Giovanelli's tender consideration of her subject matter eludes today's culture of endless scrolling and visual burnout. To behold her work is reorienting; it is detached from familiar urgencies and delivers moments of deep consideration.

About the artist

Louise Giovanelli (b. 1993, London, UK) lives and works in Frankfurt am Main (DE), where she is pursuing her Master's Degree at the Städelschule with professor Amy Sillman.

not for publication

For more information, interview and royalty free image requests please contact the gallery in New York.
press@grimmgallery.com +1 (646) 484-5223

202 Bowery
New York 10012
United States

Frans Halsstraat 26
1072BR Amsterdam
The Netherlands

Keizersgracht 241
1016EA Amsterdam
GRIMM Gallery, Inc.

Tel +1 (646) 484-5223
info@grimmgallery.com
www.grimmgallery.com

GRIMM

She earned a Bachelor's Degree (B.A. Hons, Fine Art) at the Manchester Academy of Fine Arts, Manchester (UK).

Recent solo exhibitions include include; *Time Inside*, Frutta Gallery, Rome (IT); *Louise Giovanelli*, Manchester Art Gallery, Manchester (UK); *Louise Giovanelli*, Workplace Foundation, Gateshead (UK); *A Throw to the Side*, Warrington Museum and Art Gallery, Warrington (UK); *Slow to Respond*, Touchstones Gallery, Rochdale (UK); *Hold your tongue*, Louise Giovanelli and Pius Fox, Transition Gallery, London (UK). She has also participated in the following group exhibitions: *El oro de los tigres*, Air de Paris, Romainville (FR); *Touching from a Distance*, curated by Workplace Foundation, The Conduit, London (UK); *The Dream That Follows The Mouth*, Arcade Gallery, London (UK); *Staedelschule: Rundgang*, Frankfurt Am Main (DE); *Tales of the haunted and the body*, curated by Kuba Paris, Casa Cristea Schneider, Berlin (DE), among others.

Giovanelli's work can be found in the Government Art Collection (UK), Sarow Gallery collection (DE), The University of Salford collection (UK), The Grundy Gallery collection (UK), Manchester Art Gallery Collection (UK), Manchester School of Art collection (UK), the Warrington Museum and Art Gallery collection (UK) and a number of private collections.

About the gallery:

GRIMM represents thirty international artists. Since its establishment in 2005, it has been the gallery's mission to represent and support the work of emerging and mid-career artists. The gallery has two exhibition spaces in Amsterdam and one in New York.



Louise Giovanelli | *An Ex* | 2020

not for publication

For more information, interview and royalty free image requests please contact the gallery in New York.
press@grimmgallery.com +1 (646) 484-5223

202 Bowery
New York 10012
United States

Frans Halsstraat 26
1072BR Amsterdam
The Netherlands

Keizersgracht 241
1016EA Amsterdam
GRIMM Gallery, Inc.

Tel +1 (646) 484-5223
info@grimmgallery.com
www.grimmgallery.com

GRIMM